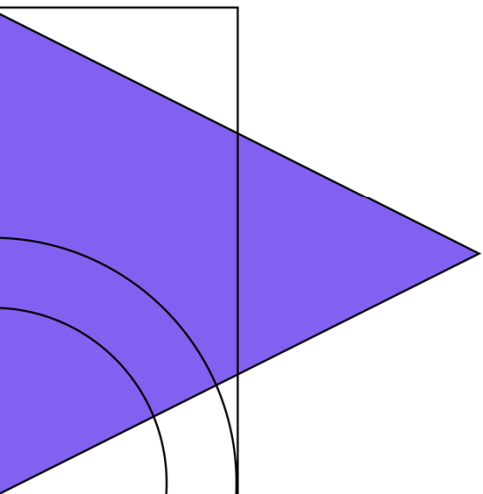
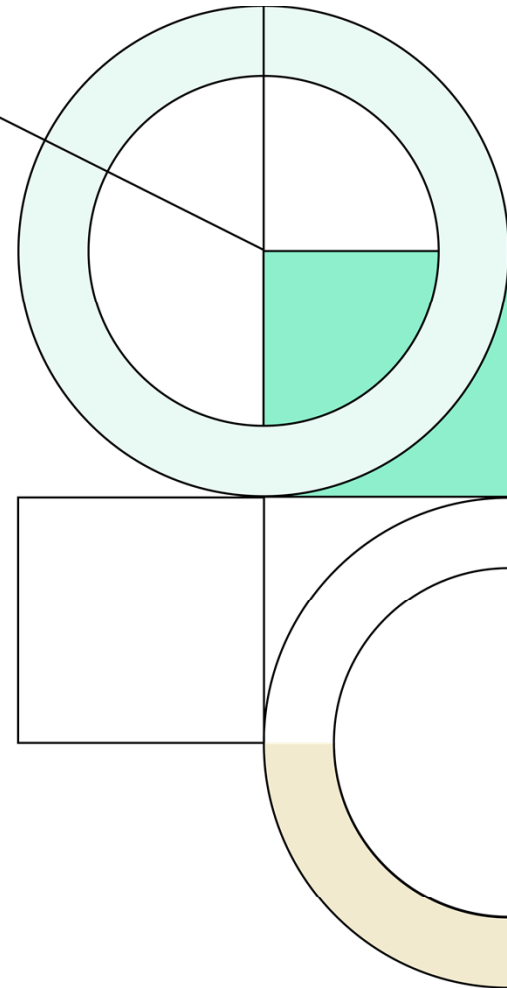




# Little Rock School District

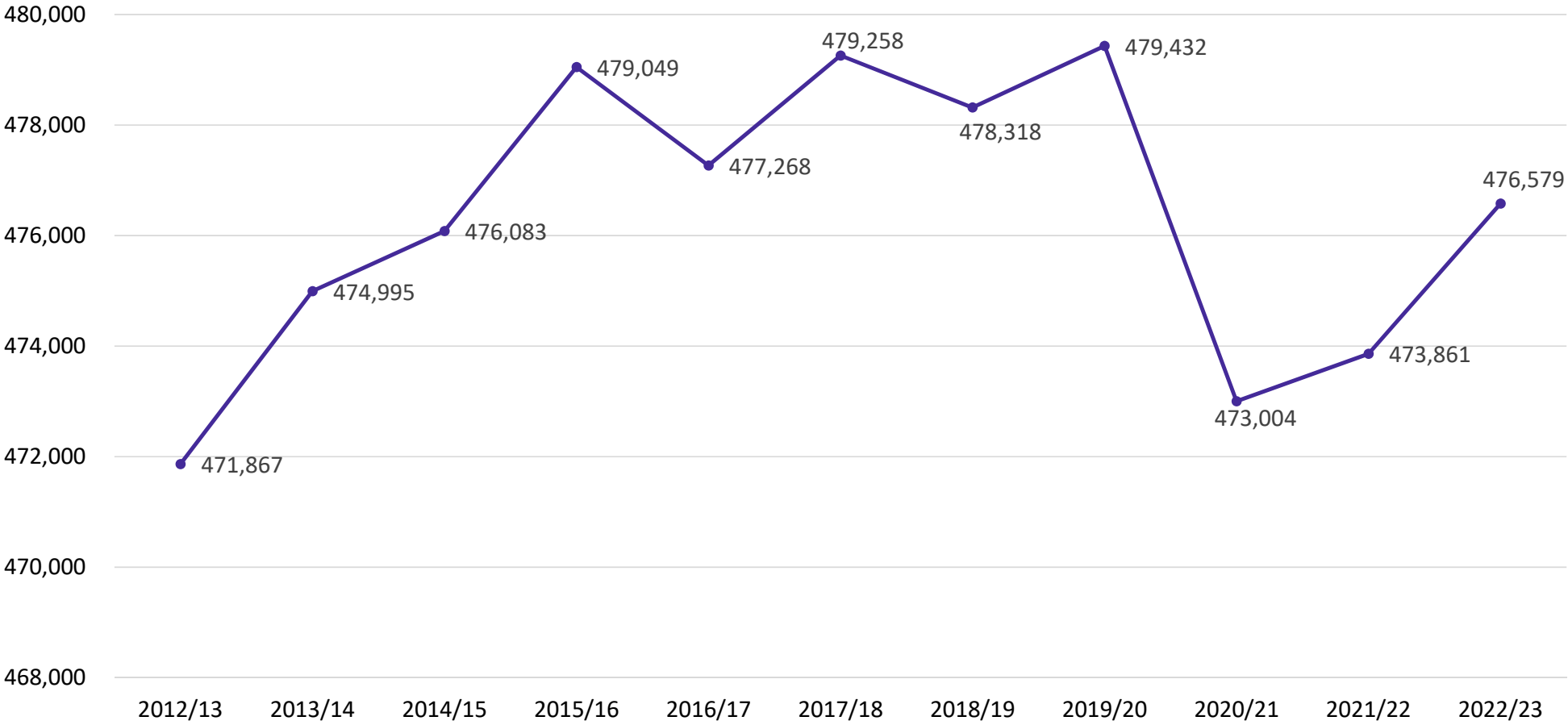
Winter 2022/23

Demographic Report



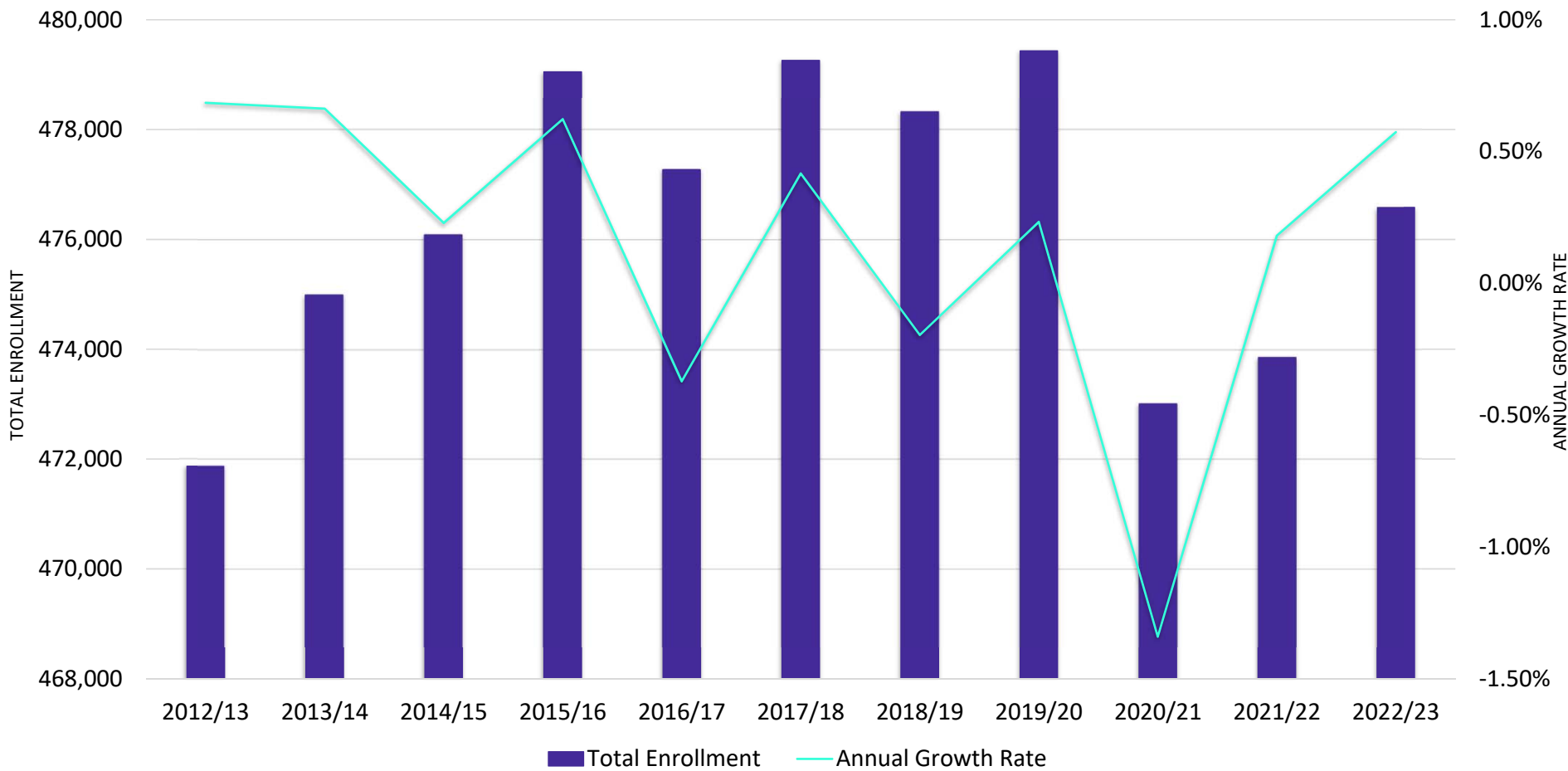


# Arkansas State Enrollment





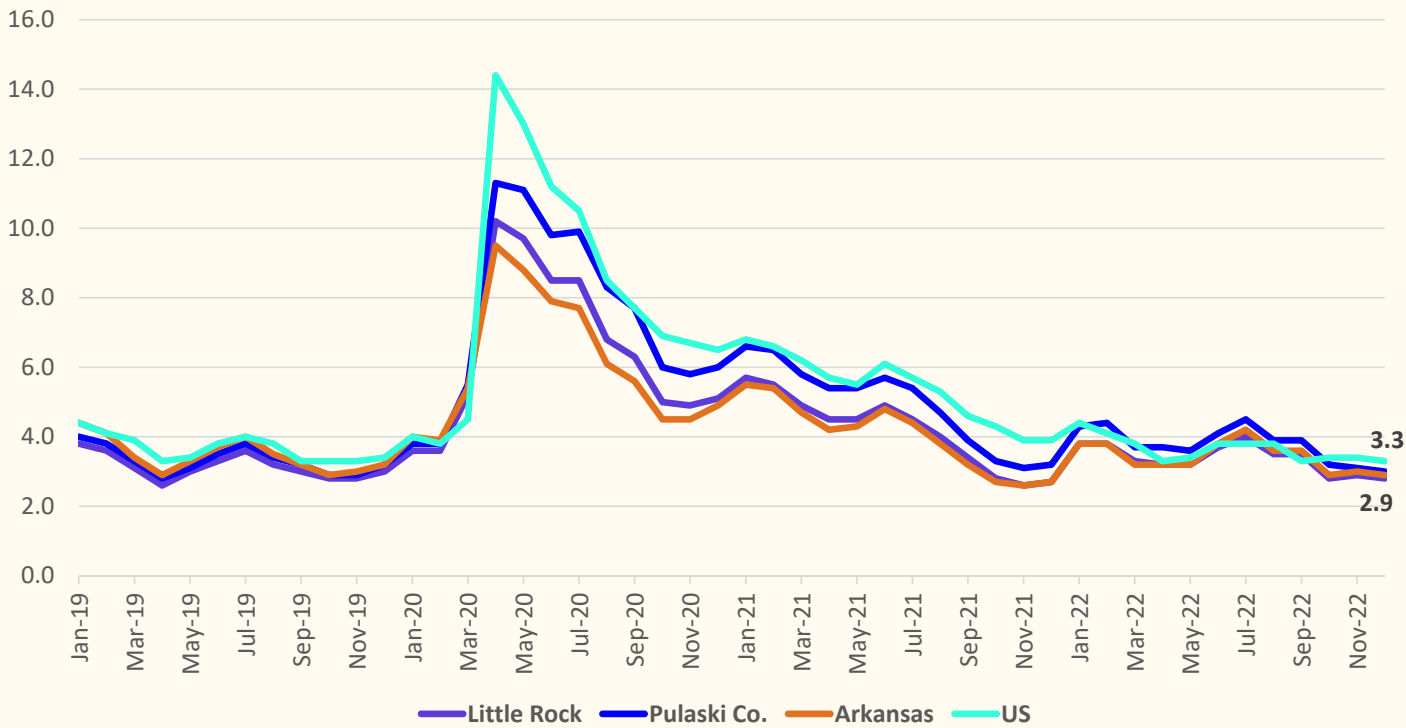
# Arkansas State Enrollment and Annual Percent Change



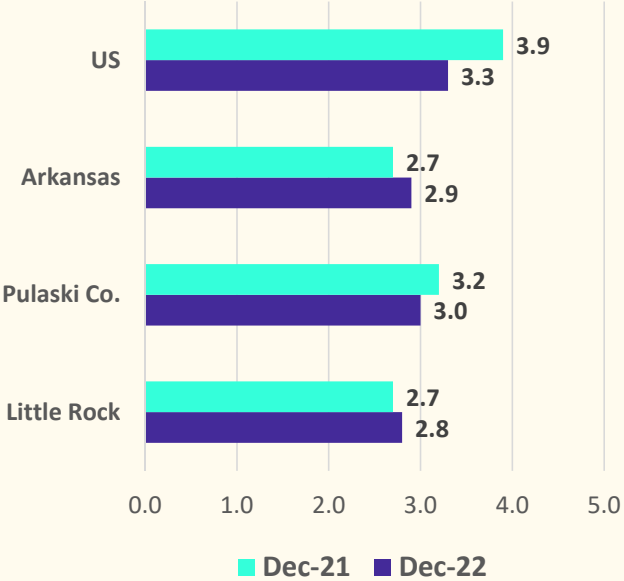


# Local Economic Conditions

Unemployment Rate, Jan 2019 - Dec 2022



Unemployment Rate, Year over Year



Dec-21 Dec-22



## Local Economic Development News – 2022/23 Highlights

### Port of Little Rock Expansion

- Efforts in 2023 will ramp up to develop an area at the Port of Little Rock in hopes of attracting an auto manufacturer, according to the Little Rock Regional Chamber of Commerce.
- The location would be about 1,000 acres in the with access to river, road, rail and air transportation to ship and receive products.



### W&W Afco Steel

- W&W | AFco Steel, the largest steel fabricator in the United States, will locate a production facility in the former LM Wind Power complex at the Port of Little Rock.
- The expansion will add 115 full time jobs over five years and represents an \$18.7 million investment for the Company.



### Tractor Supply Company

- Tractor Supply Company announced plans to build a new 900,000 sf distribution center, an investment of approximately \$100 million in initial capital outlay.
- The facility is anticipated to create more than 450 new full-time jobs by the end of 2023 and service about 250 Tractor Supply stores at full capacity.

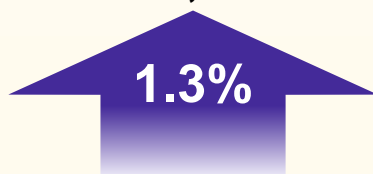
### Arkana Laboratories

- Arkana Laboratories will invest upwards of \$30 million to expand its Little Rock headquarters and add 74 new jobs in the next five years.
- The company, which offers diagnostic pathological services nationwide, also said Wednesday the investment will add 10,000 square feet of space to the 95,000-square-foot-facility in Westlake Corporate Park.



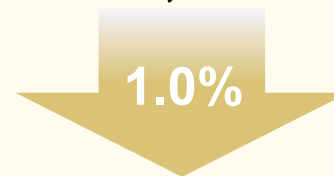
## District Demographic Snapshot

2022 District  
Census Population  
**180,495**



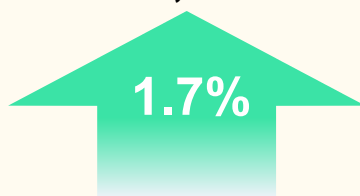
**178,260**  
2010 Census  
District Population

2022 Total District Population  
Under 18  
**46,087**



**46,540**  
2010 Census District  
Population Age 19 and Under

2022 District Households  
**77,553**



**76,240**  
2010 District Households

2022 District Household Size  
**2.33**

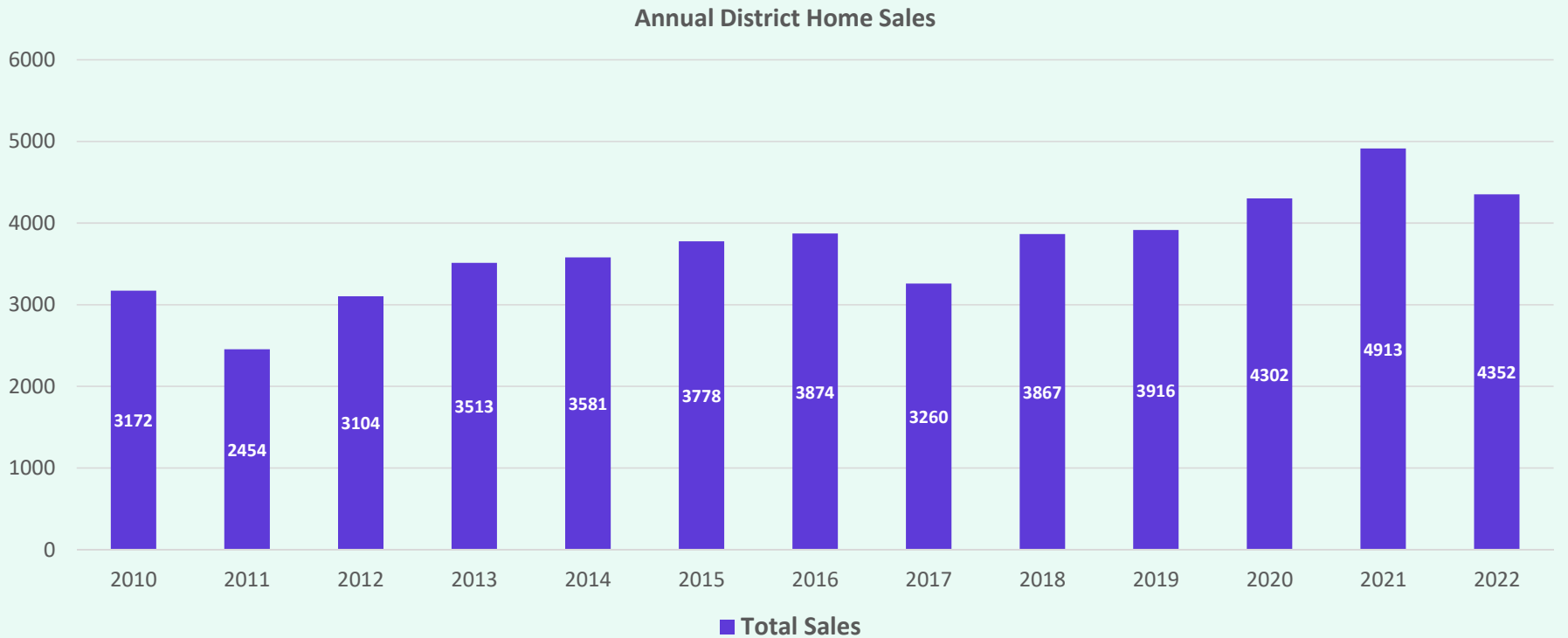
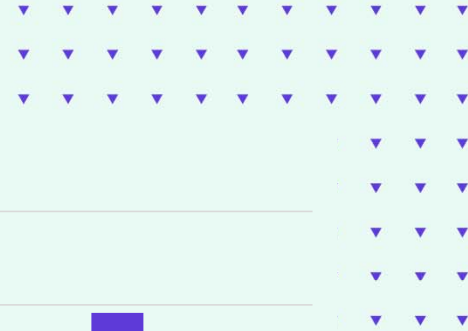


**2.34**  
2010 District Household Size

Source: 2010 and 2020 US Census PL94-171 Data



## Little Rock SD Historical Home Sales



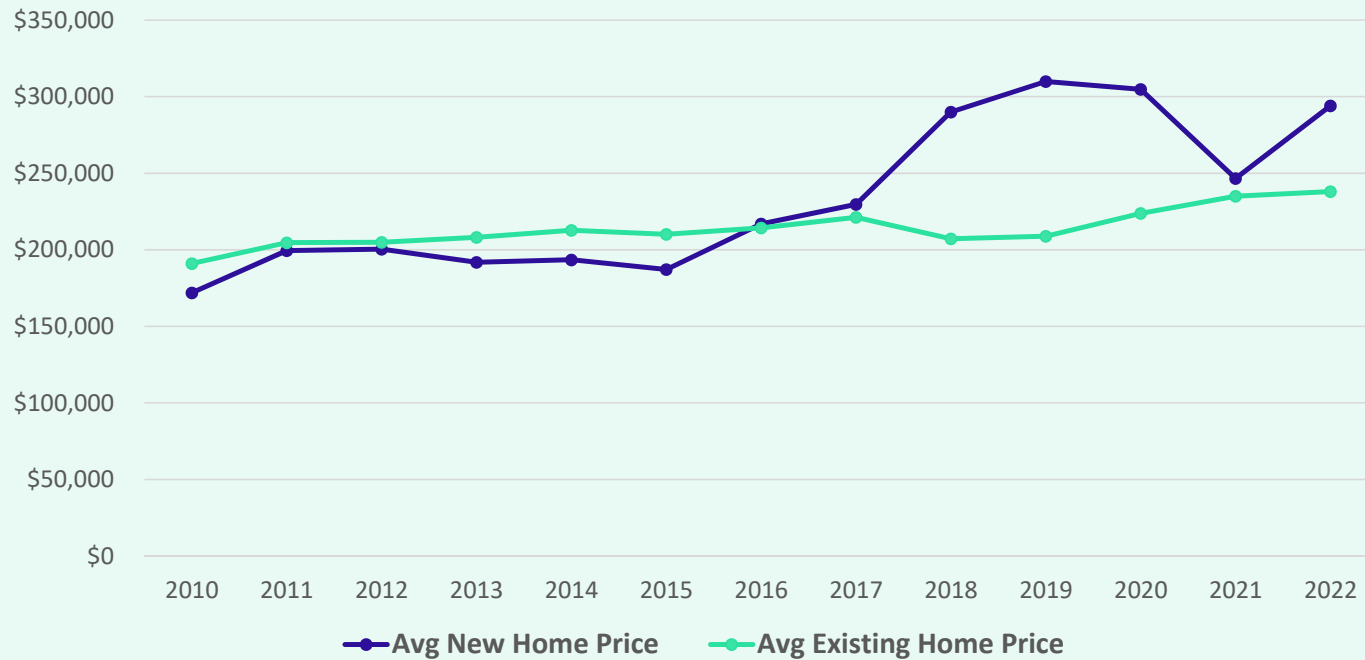
- Little Rock SD had 4,352 total home sales in 2022, an 11.4% decrease from 2021 totals
- New home sales in 2022 accounted for nearly 3% of the total district home sales





## Little Rock SD Home Price Analysis

Average New vs Existing Home Price, 2010 - 2022



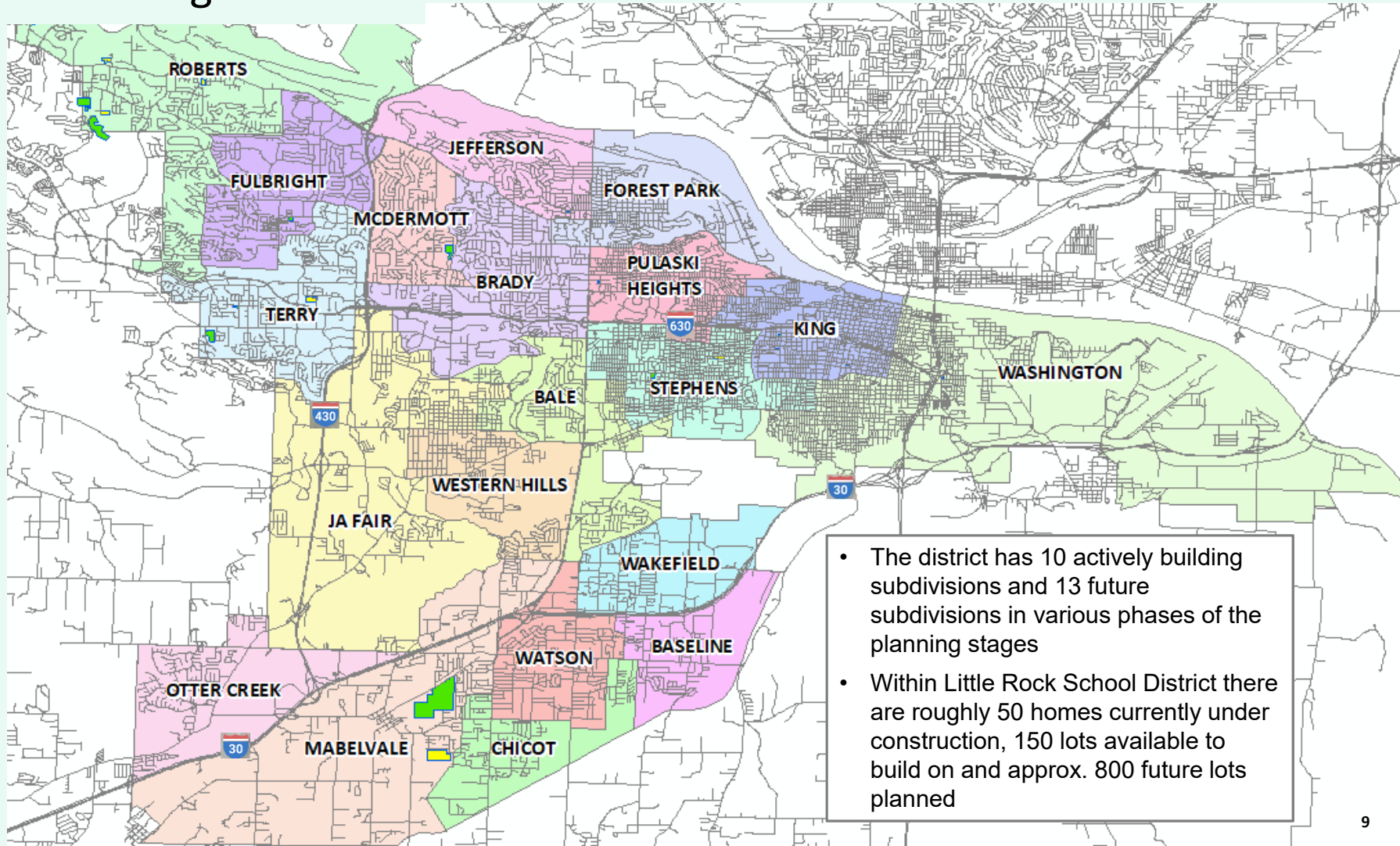
- The average new home sale price in Little Rock SD has risen 71% since 2010, an increase of \$122,143
- The average existing home sale price within the district has increased nearly 25% over the last 12 years, rising \$46,932

	Avg New Home	Avg Existing Home
2010	\$171,934	\$191,063
2011	\$199,491	\$204,637
2012	\$200,412	\$204,885
2013	\$191,859	\$208,106
2014	\$193,463	\$212,717
2015	\$187,175	\$210,172
2016	\$216,945	\$214,305
2017	\$229,668	\$221,226
2018	\$289,961	\$207,174
2019	\$309,944	\$208,878
2020	\$304,840	\$223,855
2021	\$246,630	\$234,984
2022	\$294,077	\$237,995





## District Housing Overview



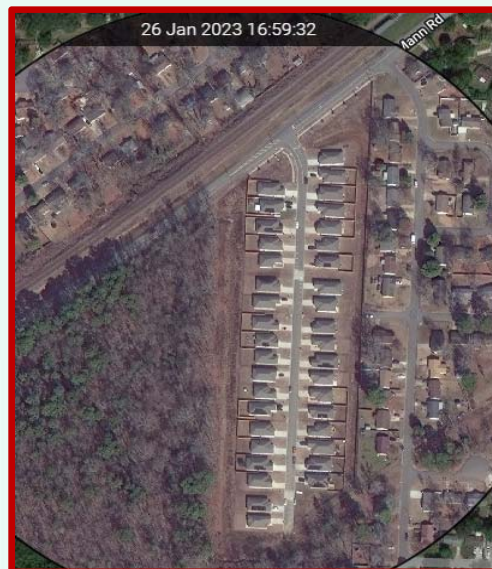




## Residential Activity

### The Parks

- 538 total lots
- 38 occupied homes
- 500 futures
- Development timeline expected to be lengthy (several years)
- Homes priced from the upper-\$100's
- Mabelvale Elem Zone







## Residential Activity

### Shiloh Grove

- 103 total homes
- 103 future homes
- Development to be done in two phases
- Lots priced from the low-\$30's
- Groundwork is underway
- Mabelvale Elem Zone







## Residential Activity

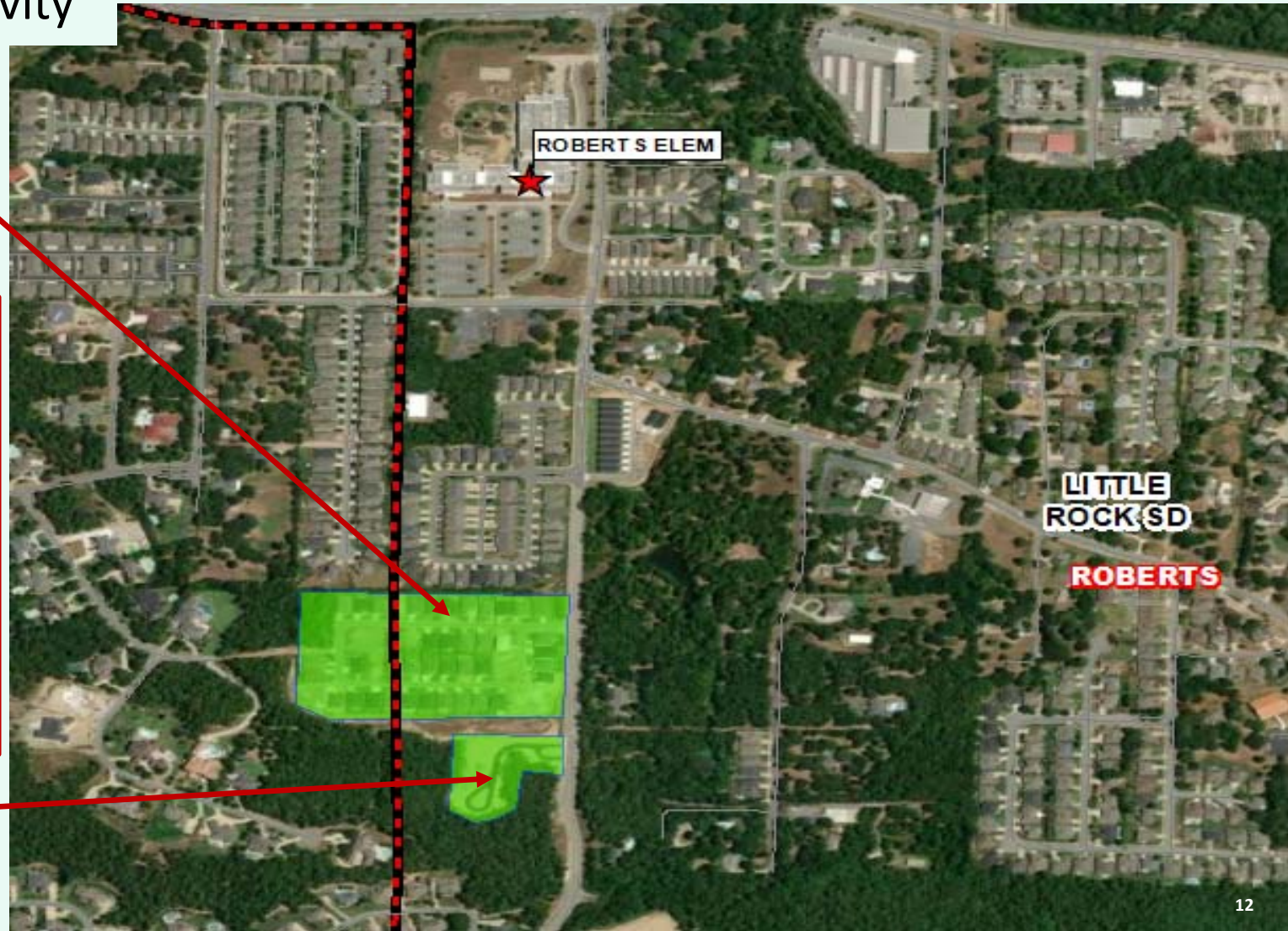
### Belles Fleurs

- 55 total lots (~40 in LRSD)
- 10 occupied homes
- 32 UC, 7 VDL
- 6 future homes
- Priced from the mid-\$300's
- RPM Group Development
- Roberts Elem Zone



### Whitehaven

- 5 total lots
- 5 VDL
- Roberts Elem Zone







## Residential Activity

### Wolfsbridge at Leawood

- 58 total lots at north end of Brookside Drive
- 58 VDL (streets in)
- Wiggins Family Real Estate Hldgs.
- Roberts Elem Zone

26 Jan 2023 16:59:32







## Residential Activity

### Woodlands Park

- 45 total lots
- 40 VDL; 5 UC
- Graham Smith & Randy James Community
- Priced from the mid-\$350's
- Terry Elem Zone



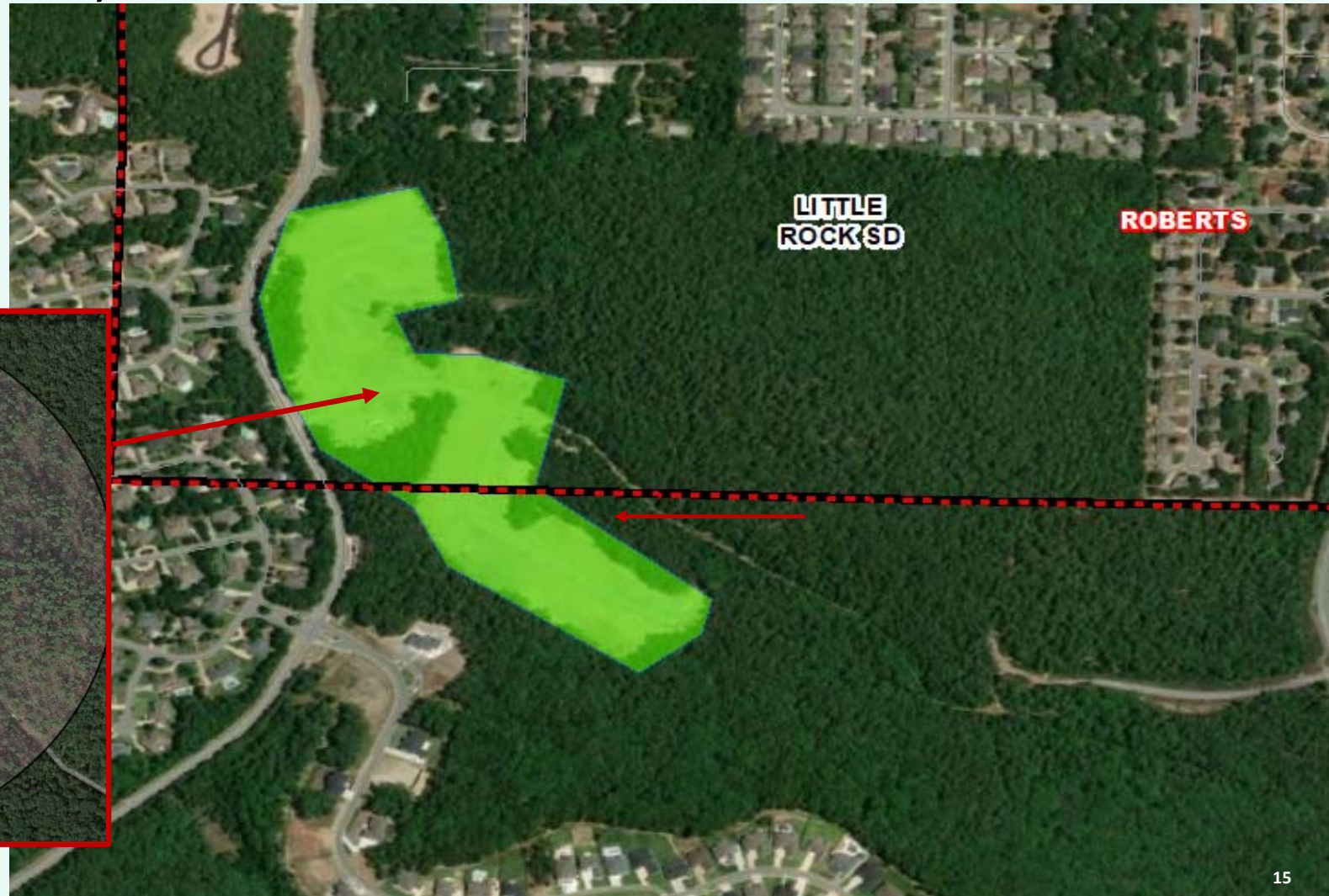




## Residential Activity

### Abington Court

- 40 total lots; 25 in LRSD
- 2 UC, 23 VDL
- Potlatch Deltic/Chenal Properties
- Lots starting in the low-\$100's
- Roberts Elem Zone



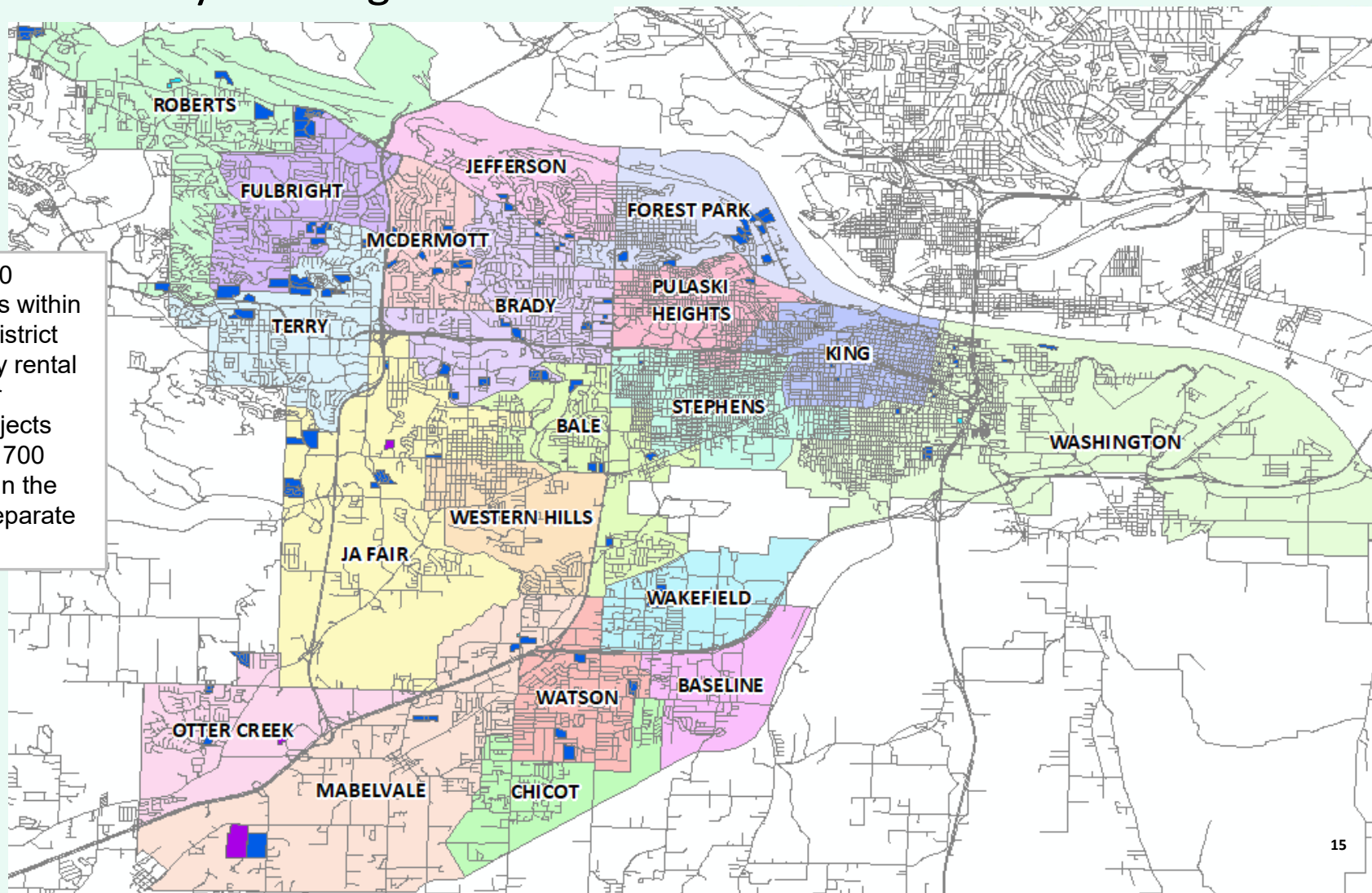


## District Multi-Family Housing Overview

- There are roughly 19,200 existing multi-family units within the Little Rock School District
- Nearly 1,000 multi-family rental units are currently under construction in three projects
- The District has approx. 700 future multi-family units in the planning stages in six separate projects

### Multi-Family Status

-  EXISTING
-  FUTURE
-  UC



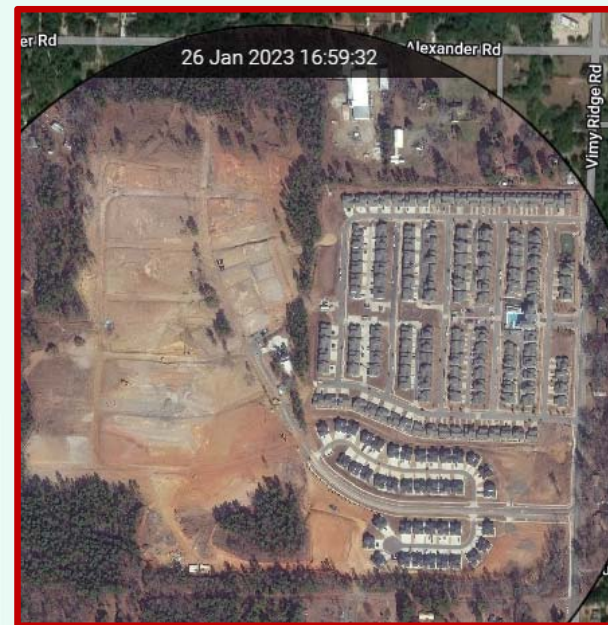




## Multi-Family Activity

### Village at the Gateway

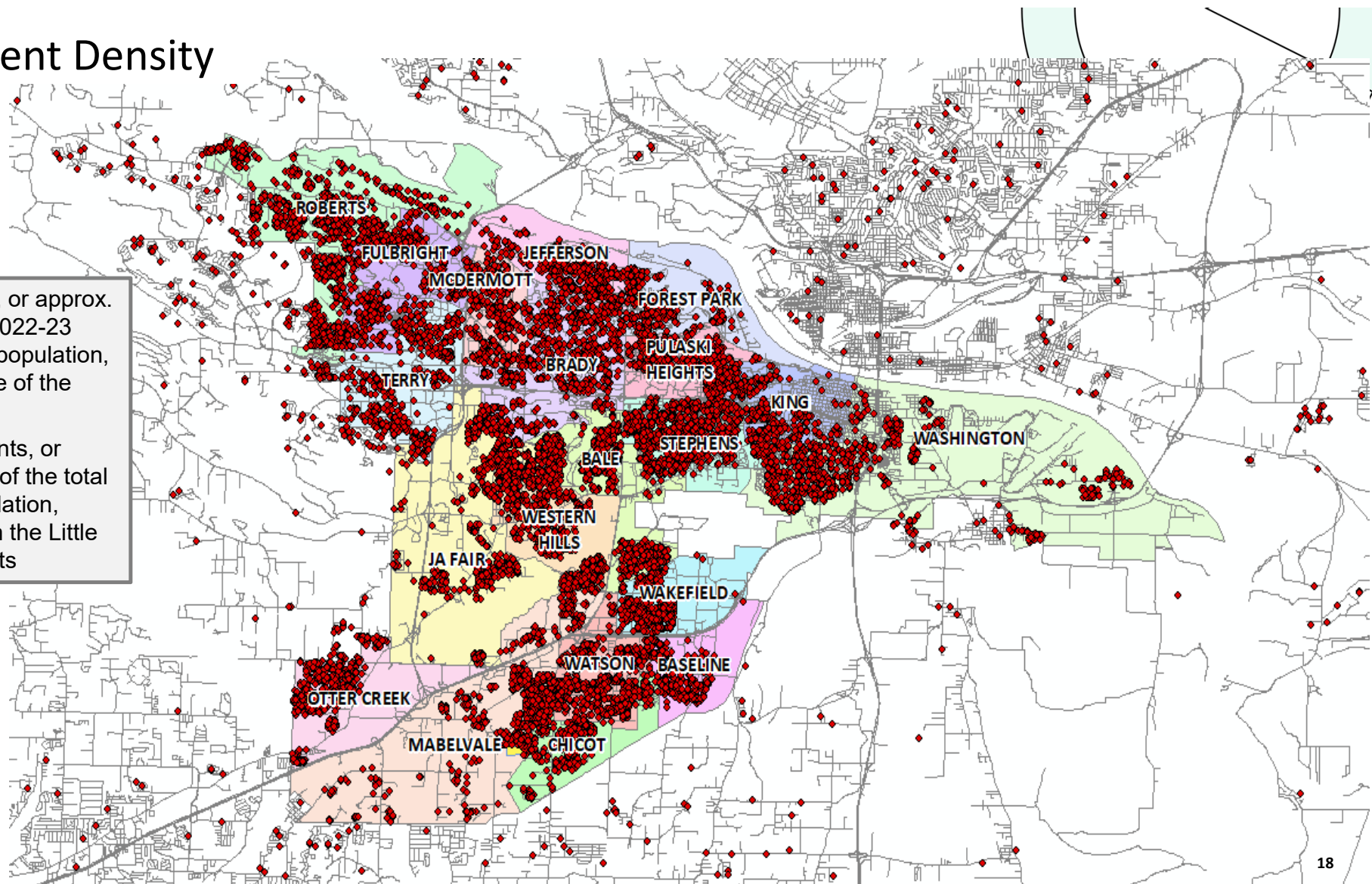
- 581 future units; leased property
- Combination duplex, triplex buildings
- 443 existing units
- Groundwork underway on newest phases
- \$900 - \$1,700/month rent prices
- Mabelvale Elem Zone





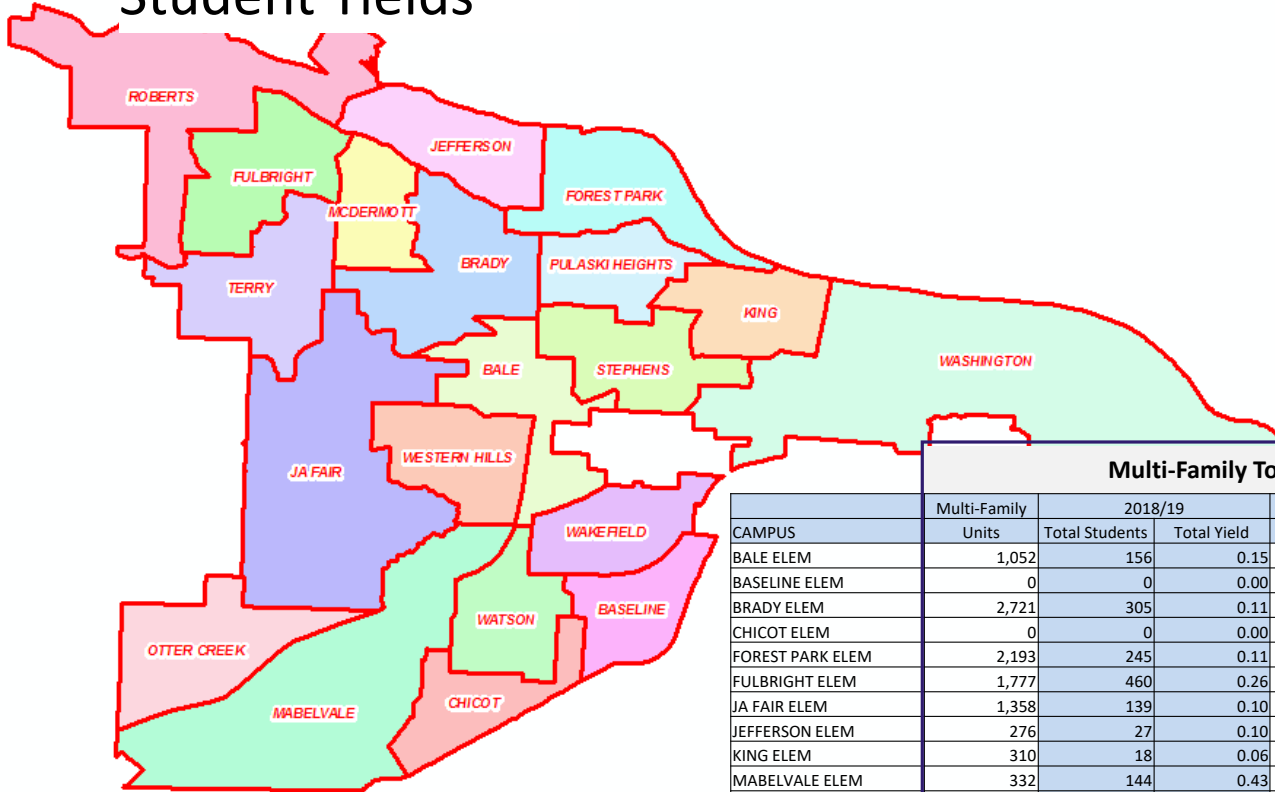
## Student Density

- 814 students, or approx. 3.7% of the 2022-23 total student population, reside outside of the district
- 20,359 students, or approx. 93% of the total student population, resides within the Little Rock city limits





# Student Yields

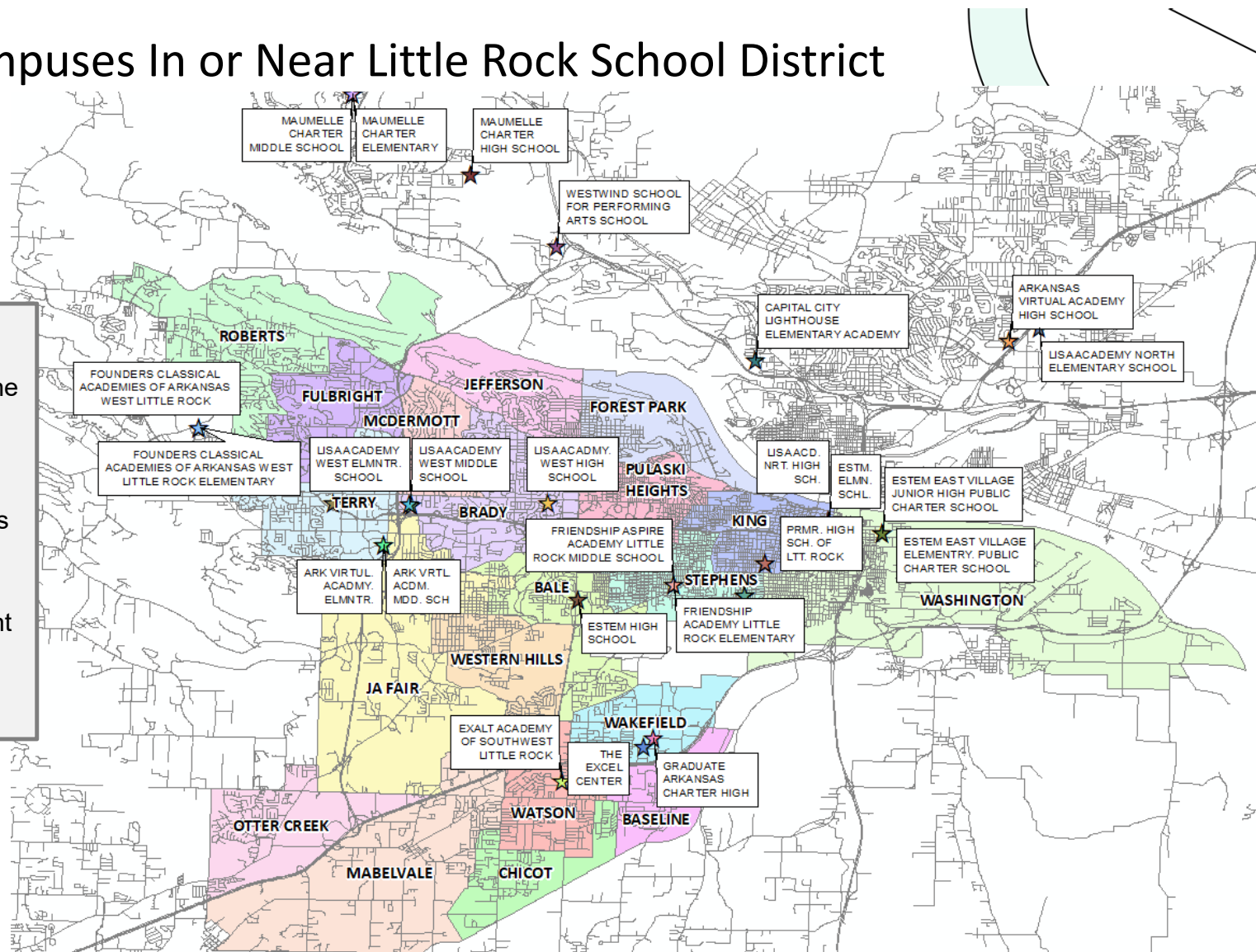


	Multi-Family Totals					All Residential Totals			
	Multi-Family	2018/19		2022/23		2018/19		2022/23	
CAMPUS	Units	Total Students	Total Yield	Total Students	Total Yield	Total Students	Total Yield	Total Students	Total Yield
BALE ELEM	1,052	156	0.15	159	0.15	1,261	0.34	1,248	0.34
BASELINE ELEM	0	0	0.00	0	0.00	745	0.63	691	0.59
BRADY ELEM	2,721	305	0.11	256	0.09	1,119	0.22	1,049	0.21
CHICOT ELEM	0	0	0.00	0	0.00	1,108	0.62	1,060	0.60
FOREST PARK ELEM	2,193	245	0.11	229	0.10	757	0.29	592	0.23
FULBRIGHT ELEM	1,777	460	0.26	354	0.16	1,187	0.36	1,042	0.32
JA FAIR ELEM	1,358	139	0.10	239	0.14	1,504	0.31	1,469	0.30
JEFFERSON ELEM	276	27	0.10	73	0.26	657	0.23	645	0.23
KING ELEM	310	18	0.06	14	0.05	683	0.17	468	0.12
MABELVALE ELEM	332	144	0.43	146	0.11	1,540	0.39	1,439	0.36
MCDERMOTT ELEM	1,452	310	0.21	255	0.18	860	0.32	808	0.30
OTTER CREEK ELEM	424	107	0.25	107	0.13	1,089	0.52	960	0.46
PULASKI HEIGHTS ELEM	147	3	0.02	3	0.02	772	0.22	594	0.17
ROBERTS ELEM	1,260	251	0.20	308	0.21	1,499	0.28	1,707	0.32
STEPHENS ELEM	43	5	0.12	1	0.02	1,577	0.24	1,223	0.19
TERRY ELEM	2,364	325	0.14	354	0.19	1,068	0.25	1,052	0.25
WAKEFIELD ELEM	477	87	0.18	112	0.23	941	0.57	906	0.55
WASHINGTON ELEM	1,349	79	0.06	65	0.04	1,680	0.22	1,184	0.16
WATSON ELEM	910	255	0.28	288	0.32	1,537	0.54	1,588	0.56
WESTERN HILLS ELEM	0	0	0.00	0	0.00	1,008	0.30	904	0.27
TOTALS	18,445	2,916		2,963		22,592		20,629	



## Charter Campuses In or Near Little Rock School District

- Approximately 30 open-enrollment charter campuses are in or near the Little Rock school district boundaries
- 21 campuses operate in Little Rock School District's Boundaries, serving about 8,700 students
- Statewide, open-enrollment charter school enrollment has risen over 50% in the last five years





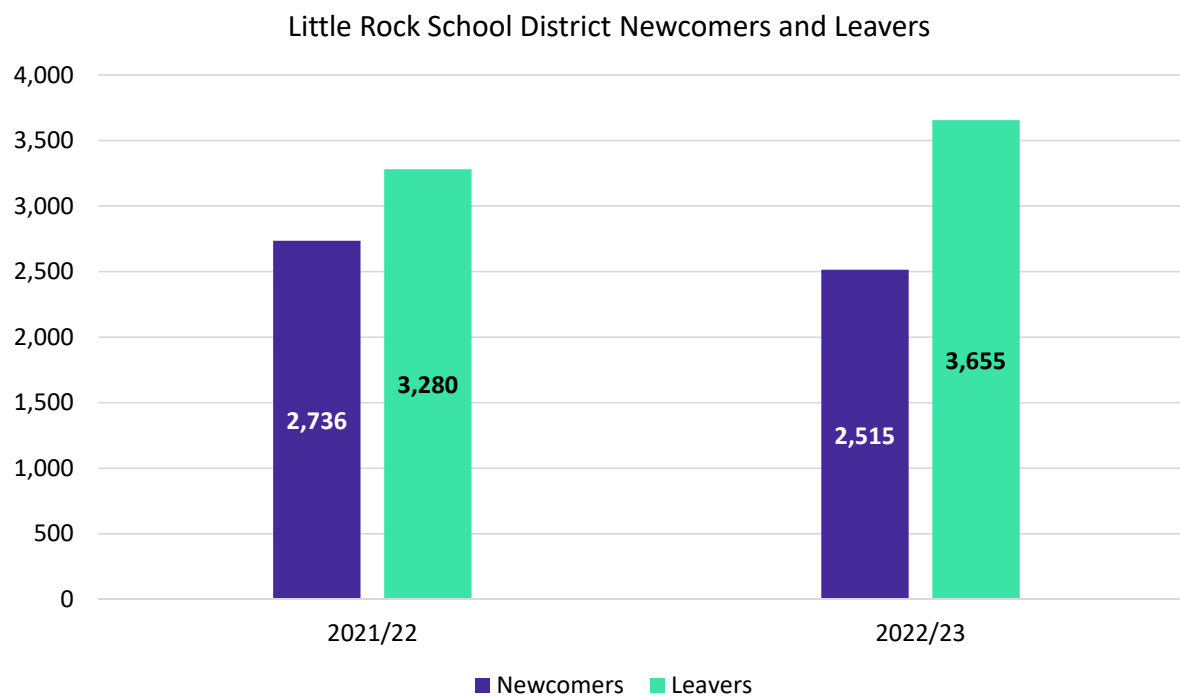
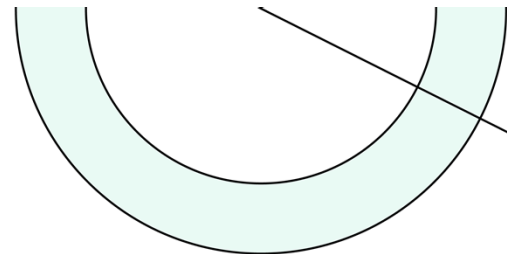
# Charter Enrollment in Little Rock Area

Name	Student Enrollment					5-Year		1-Year	
	2018-19	2019-20	2020-21	2021-22	2022-23	Change	Percent	Change	Percent
MAUMELLE CHARTER HIGH SCHOOL	463	545	605	641	454	-9	-1.94%	-187	-29.10%
ARKANSAS CONNECTIONS ACADEMY HIGH*	1,236	1,597	2,836	3,390	3,231	1995	161.41%	-159	-4.70%
CAPITAL CITY LIGHTHOUSE ELEMENTARY ACADEMY	N/A	N/A	N/A	125	124	N/A	N/A	-1	-0.80%
ARK VIRTUAL ACADEMY ELEMENTARY	699	669	1,477	1,367	1,041	342	48.93%	-326	-23.80%
ARK VIRTUAL ACADEMY MIDDLE SCH	736	697	1,064	1,044	997	261	35.46%	-47	-4.50%
ARKANSAS VIRTUAL ACADEMY HIGH SCHOOL	926	1,108	1,331	1,444	1,695	769	83.05%	251	17.40%
ESTEM EAST VILLAGE ELEMENTARY PUBLIC CHARTER SCHOOL	780	793	786	800	772	-8	-1.03%	-28	-3.50%
ESTEM EAST VILLAGE JUNIOR HIGH PUBLIC CHARTER SCHOOL	288	376	386	334	292	4	1.39%	-42	-12.60%
ESTEM ELEMENTARY SCHOOL	981	969	981	944	892	-89	-9.07%	-52	-5.50%
ESTEM HIGH SCHOOL	506	567	550	496	528	22	4.35%	32	6.50%
ESTEM JUNIOR HIGH PUBLIC CHARTER SCHOOL	515	497	477	478	406	-109	-21.17%	72	-15.10%
EXALT ACADEMY OF SOUTHWEST LITTLE ROCK	406	486	518	539	638	232	57.14%	99	18.40%
FOUNDERS CLASSICAL ACADEMIES OF ARKANSAS WEST LITTLE ROCK	N/A	150	145	107	71	N/A	N/A	-36	-33.60%
FOUNDERS CLASSICAL ACADEMIES OF ARKANSAS WEST LITTLE ROCK ELEMENTARY	N/A	N/A	N/A	15	59	N/A	N/A	44	293%
FRIENDSHIP ACADEMY LITTLE ROCK ELEMENTARY	N/A	N/A	N/A	N/A	241	N/A	N/A	N/A	N/A
FRIENDSHIP ASPIRE ACADEMY LITTLE ROCK MIDDLE SCHOOL	N/A	N/A	N/A	N/A	67	N/A	N/A	N/A	N/A
GRADUATE ARKANSAS CHARTER HIGH	125	119	91	141	381	256	204.80%	240	170.20%
LISA ACADEMY ARKANSAS HYBRID SCHOOL	N/A	N/A	N/A	115	222	N/A	N/A	107	93%
LISA ACADEMY NORTH HIGH SCHOOL	184	235	286	282	299	115	62.50%	17	6%
LISA ACADEMY NORTH MIDDLE SCHOOL	237	294	376	358	336	99	41.77%	-22	-6.10%
LISA ACADEMY WEST ELEMENTARY SCHOOL	607	643	647	632	626	19	3.13%	-6	-0.90%
LISA ACADEMY WEST HIGH SCHOOL	440	435	452	451	412	-28	-6.36%	-39	-8.60%
LISA ACADEMY WEST MIDDLE SCHOOL	327	317	523	544	503	176	53.82%	-41	-7.50%
PREMIER HIGH SCHOOL OF LITTLE ROCK	116	95	125	125	82	-34	-29.31%	-43	-34.40%
PREMIER HIGH SCHOOL ONLINE	N/A	N/A	N/A	N/A	125	N/A	N/A	N/A	N/A
PREMIER HIGH SCHOOL OF NORTH LITTLE ROCK	N/A	70	136	143	135	N/A	N/A	-8	-5.50%
IVY HILL ACADEMY OF SCHOLARSHIP	275	211	199	186	163	-112	-40.73%	-23	-12.40%
NICHOLS INTERMEDIATE ACADEMY OF LEADERSHIP	N/A	122	130	135	140	N/A	N/A	5	3.70%
PRODIGY PREPARATORY ACADEMY OF SERVICE	N/A	N/A	34	69	91	N/A	N/A	22	31.90%
THE EXCEL CENTER	102	93	127	72	99	-3	-2.94%	27	37.50%
WESTWIND SCHOOL FOR PERFORMING ARTS SCHOOL	N/A	N/A	N/A	63	83	N/A	N/A	20	31.70%
<b>TOTAL</b>	<b>9,949</b>	<b>11,088</b>	<b>14,282</b>	<b>15,040</b>	<b>15,205</b>	<b>5,256</b>	<b>53.80%</b>	<b>165</b>	<b>1.10%</b>

\*Arkansas Connections Academy is not in the LR area, but likely serves students from LRSD

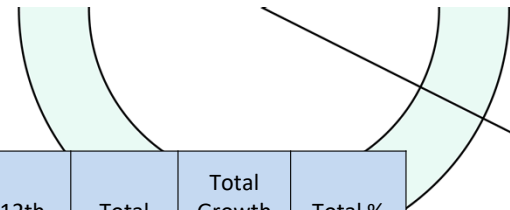


# Newcomer Leaver Analysis





# Historical Trend by Grade Level

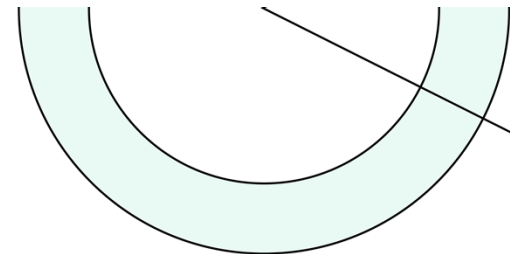


Year (Oct.)	PK	K	1st	2nd	3rd	4th	5th	6th	7th	8th	9th	10th	11th	12th	Total	Total Growth	Total %
2018/19	1,766	1,831	1,801	1,867	1,794	1,784	1,867	1,672	1,484	1,450	1,620	1,514	1,444	1,322	23,216		
2019/20	1,764	1,795	1,811	1,764	1,827	1,779	1,767	1,673	1,637	1,473	1,643	1,514	1,346	1,351	23,144	-72	-0.3%
2020/21	867	1,567	1,714	1,729	1,653	1,700	1,676	1,600	1,620	1,578	1,622	1,534	1,439	1,289	21,588	-1,556	-6.7%
2021/22	1,268	1,653	1,641	1,686	1,709	1,619	1,659	1,506	1,547	1,569	1,923	1,507	1,404	1,344	22,035	447	2.1%
2022/23	1,321	1,534	1,620	1,573	1,634	1,620	1,596	1,525	1,448	1,492	1,804	1,625	1,402	1,261	21,455	-580	-2.6%

Yellow box = largest grade per year  
Green box = second largest grade per year

3yr Avg	0.999	0.952	0.994	0.966	0.965	0.953	0.968	0.908	0.966	0.966	1.157	0.903	0.932	0.930	0.966	0.946	0.980
cohort	PK	K	1st	2nd	3rd	4th	5th	6th	7th	8th	9th	10th	11th	12th	ELEM	MS	HS
2019/20	0.999	0.980	0.989	0.979	0.979	0.992	0.990	0.896	0.979	0.993	1.133	0.935	0.889	0.936	0.985	0.956	0.973
2020/21	0.491	0.873	0.955	0.955	0.937	0.930	0.942	0.905	0.968	0.964	1.101	0.934	0.950	0.958	0.932	0.946	0.986
2021/22	1.463	1.055	1.047	0.984	0.988	0.979	0.976	0.899	0.967	0.969	1.219	0.929	0.915	0.934	1.005	0.945	0.999
2022/23	1.042	0.928	0.980	0.959	0.969	0.948	0.986	0.919	0.961	0.964	1.150	0.845	0.930	0.898	0.962	0.948	0.956

- Enrollment dropped in 2022/23, likely related to continued charter impacts and targeted predominately at Kindergarten and high school
- Following the COVID drop of 2020/21 the rebound in Little Rock schools was tempered by charter increases and sustained home schooling going into 2021/22
- Biggest challenge appears to be at 6<sup>th</sup> grade averaging a 10% drop from 5<sup>th</sup> to 6<sup>th</sup> grade.



## Birth Analysis

Birth Year (KG Enroll Year)	Pulaski County Births	Kindergarten Enrollment	Ratio
2012 (2017/18)	5,602	1,734	0.310
2013 (2018/19)	5,521	1,722	0.312
2014 (2019/20)	5,641	1,524	0.270
2015 (2020/21)	5,571	1,653	0.297
2016 (2021/22)	5,348	1,534	0.287
2017 (2022/23)	5,259	1,542	0.293
2018 (2023/24)	5,123	1,570	0.306
2019 (2024/25)	5,183	1,576	0.304
2020 (2025/26)	5,041	1,584	0.314
2021 (2025/26)	5,012	1,568	0.313





## Ten Year Forecast by Grade Level

Year (Oct.)	PK	K	1st	2nd	3rd	4th	5th	6th	7th	8th	9th	10th	11th	12th	Total	Total Growth	Total %
2018/19	1,766	1,831	1,801	1,867	1,794	1,784	1,867	1,672	1,484	1,450	1,620	1,514	1,444	1,322	23,216		
2019/20	1,764	1,795	1,811	1,764	1,827	1,779	1,767	1,673	1,637	1,473	1,643	1,514	1,346	1,351	23,144	-72	-0.3%
2020/21	867	1,567	1,714	1,729	1,653	1,700	1,676	1,600	1,620	1,578	1,622	1,534	1,439	1,289	21,588	-1,556	-6.7%
2021/22	1,268	1,653	1,641	1,686	1,709	1,619	1,659	1,506	1,547	1,569	1,923	1,507	1,404	1,344	22,035	447	2.1%
2022/23	1,321	1,534	1,620	1,573	1,634	1,620	1,596	1,525	1,448	1,492	1,804	1,625	1,402	1,261	21,455	-580	-2.6%
2023/24	1,296	1,542	1,596	1,606	1,551	1,613	1,589	1,459	1,468	1,391	1,742	1,626	1,501	1,299	21,278	-177	-0.8%
2024/25	1,297	1,570	1,600	1,555	1,581	1,520	1,590	1,455	1,446	1,449	1,603	1,599	1,508	1,379	21,150	-128	-0.6%
2025/26	1,312	1,576	1,600	1,577	1,538	1,570	1,505	1,451	1,457	1,387	1,681	1,450	1,472	1,403	20,980	-170	-0.8%
2026/27	1,323	1,597	1,605	1,578	1,554	1,517	1,552	1,381	1,429	1,423	1,611	1,526	1,335	1,360	20,792	-188	-0.9%
2027/28	1,312	1,595	1,631	1,578	1,555	1,535	1,497	1,412	1,368	1,392	1,647	1,467	1,411	1,232	20,631	-161	-0.8%
2028/29	1,304	1,598	1,631	1,603	1,553	1,531	1,511	1,377	1,401	1,327	1,614	1,494	1,353	1,307	20,604	-27	-0.1%
2029/30	1,312	1,605	1,631	1,604	1,575	1,531	1,507	1,386	1,363	1,365	1,539	1,466	1,378	1,251	20,513	-91	-0.4%
2030/31	1,316	1,612	1,641	1,604	1,584	1,550	1,505	1,383	1,375	1,325	1,582	1,399	1,353	1,274	20,502	-12	-0.1%
2031/32	1,320	1,622	1,650	1,609	1,578	1,558	1,525	1,381	1,370	1,336	1,536	1,436	1,290	1,251	20,463	-39	-0.2%
2032/33	1,323	1,627	1,658	1,622	1,585	1,551	1,532	1,395	1,368	1,332	1,548	1,396	1,325	1,193	20,456	-7	0.0%

Yellow box = largest grade per year  
Green box = second largest grade per year

- Continued enrollment declines as retention rates stabilize
- Charter saturation begins to slow
- More stabilized 6<sup>th</sup> grade cohort and high school returns to Pre-COVID trends



# Ten Year Forecast by Elementary Campus

Campus	2021/22	Fall	ENROLLMENT PROJECTIONS									
		2022/23	2023/24	2024/25	2025/26	2026/27	2027/28	2028/29	2029/30	2030/31	2031/32	2032/33
<a href="#">Bale</a>	358	403	416	449	475	517	559	556	558	561	567	574
<a href="#">Baseline</a>	261	281	284	283	286	282	279	280	277	276	275	275
<a href="#">Brady</a>	297	332	349	358	374	392	389	386	383	384	384	384
<a href="#">Carver STEM</a>	267	325	329	304	292	292	292	298	316	324	321	329
<a href="#">Chicot</a>	803	867	880	878	877	889	855	838	840	829	824	821
<a href="#">Fair Park Early Childhood</a>	157	197	193	196	189	197	196	195	197	197	199	199
<a href="#">Forest Heights STEM</a>	711	739	722	722	727	723	723	725	724	723	724	724
<a href="#">Forest Park</a>	389	379	374	379	384	373	369	371	370	368	367	362
<a href="#">Fulbright</a>	536	551	546	544	541	551	534	539	538	538	536	532
<a href="#">Geyer Springs Early Childhood</a>	222	226	216	221	225	225	226	226	227	228	230	230
<a href="#">Gibbs</a>	269	284	289	281	287	287	286	283	284	288	289	289
<a href="#">J A Fair K-8 Prep</a>	800	898	847	883	870	864	874	870	867	869	868	868
<a href="#">Jefferson</a>	418	413	421	420	428	425	426	437	444	451	458	461
<a href="#">Martin Luther King</a>	319	341	336	329	322	320	314	314	315	313	313	311
<a href="#">Mabelvale</a>	437	520	547	553	544	560	518	517	522	527	550	578
<a href="#">McDermot</a>	264	296	280	273	275	275	280	286	292	299	307	315
<a href="#">Otter Creek</a>	391	323	311	304	289	296	302	314	311	310	307	306
<a href="#">Pulaski Heights</a>	239	271	254	238	256	245	258	265	265	268	265	261
<a href="#">Roberts</a>	970	1,004	996	966	927	901	918	911	907	908	920	924
<a href="#">Rockefeller Early Childhood</a>	161	263	262	259	266	268	267	268	269	270	272	273
<a href="#">Romine Early Childhood</a>	132	186	185	173	185	185	191	188	189	191	191	192
<a href="#">Stephens</a>	452	434	427	416	405	408	403	403	410	419	422	423
<a href="#">Terry</a>	872	352	355	371	345	342	350	349	343	345	340	333
<a href="#">Wakefield</a>	473	481	465	470	474	489	486	482	483	481	478	471
<a href="#">Washington</a>	337	319	323	314	309	307	318	311	305	297	290	283
<a href="#">Watson</a>	442	416	389	389	368	360	352	355	352	352	355	356
<a href="#">Western Hills</a>	203	287	271	257	252	247	237	243	246	248	253	258
<a href="#">Williams</a>	370	377	347	338	356	349	349	367	377	394	404	412
<b>ELEMENTARY SCHOOL TOTALS</b>	<b>12,010</b>	<b>11,765</b>	<b>11,614</b>	<b>11,568</b>	<b>11,527</b>	<b>11,569</b>	<b>11,551</b>	<b>11,577</b>	<b>11,611</b>	<b>11,659</b>	<b>11,709</b>	<b>11,745</b>
Elementary Absolute Change	762	-245	-151	-46	-41	42	-18	26	34	47	50	36
Elementary Percent Change	6.77%	-2.04%	-1.29%	-0.39%	-0.36%	0.37%	-0.15%	0.22%	0.30%	0.41%	0.43%	0.31%



# Ten Year Forecast by Secondary Campus

		Fall	ENROLLMENT PROJECTIONS									
Campus	2021/22	2022/23	2023/24	2024/25	2025/26	2026/27	2027/28	2028/29	2029/30	2030/31	2031/32	2032/33
<a href="#">Clover</a>	611	665	673	666	657	654	636	625	627	620	622	624
<a href="#">Dunbar</a>	625	320	304	302	291	286	283	276	277	275	275	276
<a href="#">Mabelvale</a>	581	569	554	569	559	543	538	525	526	522	523	524
<a href="#">Horace Mann</a>	617	618	538	546	549	548	528	520	522	515	517	518
<a href="#">Pinnacle View</a>	895	878	853	830	820	803	789	774	776	769	770	772
<a href="#">Pulaski Heights</a>	518	548	574	580	571	557	549	539	540	534	534	535
<b>JUNIOR HIGH TOTALS</b>	<b>3,847</b>	<b>3,598</b>	<b>3,496</b>	<b>3,493</b>	<b>3,447</b>	<b>3,391</b>	<b>3,323</b>	<b>3,259</b>	<b>3,268</b>	<b>3,235</b>	<b>3,241</b>	<b>3,249</b>
Middle School Absolute Change	-609	-249	-102	-3	-46	-56	-68	-64	9	-33	6	8
Middle School Percent Change	-13.67%	-6.47%	-2.83%	-0.09%	-1.32%	-1.62%	-2.01%	-1.93%	0.28%	-1.01%	0.19%	0.25%
<a href="#">Central International Studies</a>	2,501	2,338	2,366	2,272	2,205	2,134	2,111	2,127	2,069	2,063	2,028	2,006
<a href="#">Little Rock Hall STEAM</a>	259	335	365	423	451	430	433	429	420	420	413	408
<a href="#">Little Rock Southwest Magnet</a>	2,153	2,013	2,044	1,997	1,956	1,930	1,900	1,892	1,855	1,843	1,812	1,799
<a href="#">Little Rock West</a>	234	325	326	331	312	308	304	302	297	294	288	286
<a href="#">Parkview Arts Science Magnet</a>	1,031	1,081	1,067	1,066	1,082	1,030	1,009	1,018	993	988	972	963
<b>HIGH SCHOOL TOTALS</b>	<b>6,178</b>	<b>6,092</b>	<b>6,168</b>	<b>6,089</b>	<b>6,006</b>	<b>5,832</b>	<b>5,757</b>	<b>5,768</b>	<b>5,634</b>	<b>5,608</b>	<b>5,513</b>	<b>5,462</b>
High School Absolute Change	294	-86	76	-79	-83	-174	-75	11	-134	-26	-95	-51
High School Percent Change	5.00%	-1.39%	1.25%	-1.28%	-1.36%	-2.90%	-1.29%	0.19%	-2.32%	-0.46%	-1.69%	-0.93%
<b>DISTRICT TOTALS</b>	<b>22,035</b>	<b>21,455</b>	<b>21,278</b>	<b>21,150</b>	<b>20,980</b>	<b>20,792</b>	<b>20,631</b>	<b>20,604</b>	<b>20,513</b>	<b>20,502</b>	<b>20,463</b>	<b>20,456</b>
District Absolute Change	447	-580	-177	-128	-170	-188	-161	-27	-91	-12	-39	-7



## Ten Year Forecast by Grade Level – Low Scenario

Year (Oct.)	PK	K	1st	2nd	3rd	4th	5th	6th	7th	8th	9th	10th	11th	12th	Total	Total Growth	Total %
2018/19	1,766	1,831	1,801	1,867	1,794	1,784	1,867	1,672	1,484	1,450	1,620	1,514	1,444	1,322	23,216		
2019/20	1,764	1,795	1,811	1,764	1,827	1,779	1,767	1,673	1,637	1,473	1,643	1,514	1,346	1,351	23,144	-72	-0.3%
2020/21	867	1,567	1,714	1,729	1,653	1,700	1,676	1,600	1,620	1,578	1,622	1,534	1,439	1,289	21,588	-1,556	-6.7%
2021/22	1,268	1,653	1,641	1,686	1,709	1,619	1,659	1,506	1,547	1,569	1,923	1,507	1,404	1,344	22,035	447	2.1%
2022/23	1,321	1,534	1,620	1,573	1,634	1,620	1,596	1,525	1,448	1,492	1,804	1,625	1,402	1,261	21,455	-580	-2.6%
2023/24	1,266	1,542	1,569	1,577	1,519	1,583	1,559	1,436	1,443	1,391	1,742	1,626	1,501	1,299	21,052	-403	-1.9%
2024/25	1,266	1,570	1,567	1,497	1,522	1,459	1,528	1,371	1,398	1,424	1,603	1,599	1,508	1,379	20,690	-363	-1.7%
2025/26	1,286	1,576	1,567	1,515	1,449	1,482	1,416	1,384	1,358	1,343	1,652	1,450	1,472	1,403	20,352	-338	-1.6%
2026/27	1,284	1,584	1,575	1,520	1,466	1,403	1,437	1,294	1,340	1,326	1,558	1,499	1,335	1,360	19,980	-372	-1.8%
2027/28	1,251	1,568	1,584	1,522	1,469	1,417	1,360	1,303	1,264	1,307	1,535	1,418	1,385	1,232	19,616	-364	-1.8%
2028/29	1,237	1,552	1,568	1,532	1,472	1,422	1,370	1,256	1,273	1,225	1,516	1,392	1,308	1,284	19,407	-209	-1.1%
2029/30	1,236	1,546	1,550	1,518	1,477	1,420	1,373	1,261	1,223	1,240	1,420	1,376	1,283	1,209	19,133	-274	-1.4%
2030/31	1,222	1,536	1,548	1,502	1,468	1,425	1,373	1,262	1,232	1,190	1,437	1,290	1,270	1,186	18,940	-192	-1.0%
2031/32	1,210	1,523	1,541	1,495	1,447	1,417	1,375	1,263	1,232	1,197	1,378	1,305	1,190	1,175	18,749	-192	-1.0%
2032/33	1,202	1,515	1,526	1,495	1,443	1,399	1,369	1,264	1,233	1,198	1,388	1,252	1,203	1,102	18,591	-158	-0.8%

Yellow box = largest grade per year  
Green box = second largest grade per year

- 6<sup>th</sup> Grade continues to see sharp declined from 5<sup>th</sup> to 6<sup>th</sup> grade
- Kindergarten Enrollment remains below 1,600 students
- Not a major shift at High School



## Ten Year Forecast by Grade Level – High Scenario

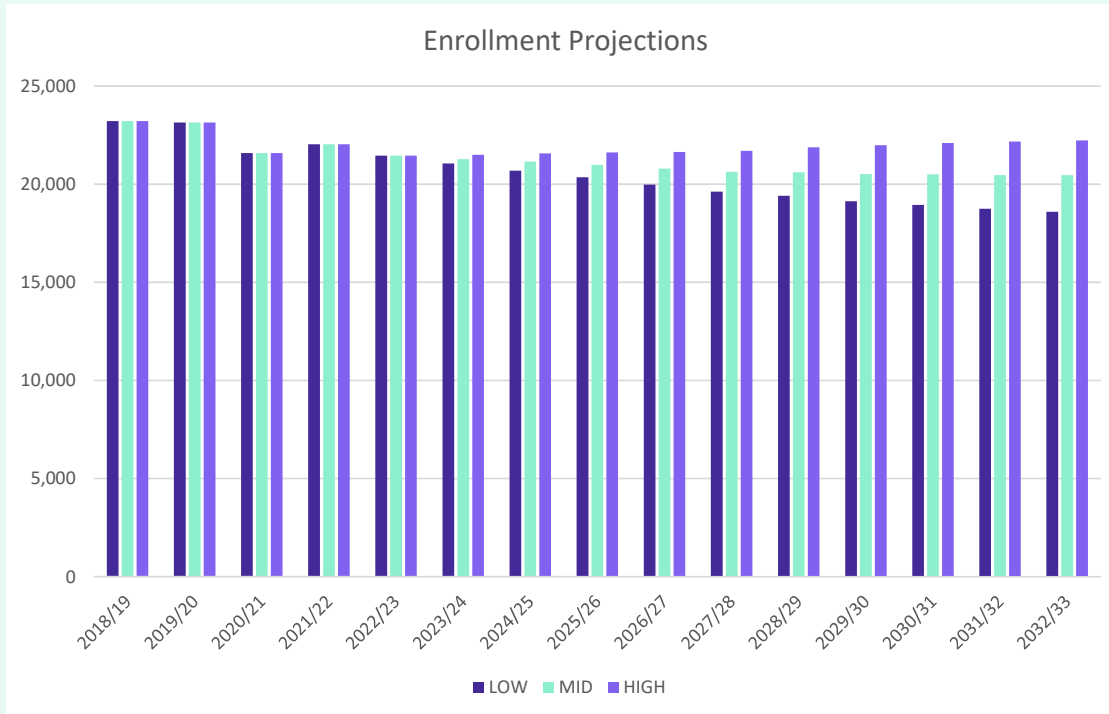
Year (Oct.)	PK	K	1st	2nd	3rd	4th	5th	6th	7th	8th	9th	10th	11th	12th	Total	Total Growth	Total %
2018/19	1,766	1,831	1,801	1,867	1,794	1,784	1,867	1,672	1,484	1,450	1,620	1,514	1,444	1,322	23,216		
2019/20	1,764	1,795	1,811	1,764	1,827	1,779	1,767	1,673	1,637	1,473	1,643	1,514	1,346	1,351	23,144	-72	-0.3%
2020/21	867	1,567	1,714	1,729	1,653	1,700	1,676	1,600	1,620	1,578	1,622	1,534	1,439	1,289	21,588	-1,556	-6.7%
2021/22	1,268	1,653	1,641	1,686	1,709	1,619	1,659	1,506	1,547	1,569	1,923	1,507	1,404	1,344	22,035	447	2.1%
2022/23	1,321	1,534	1,620	1,573	1,634	1,620	1,596	1,525	1,448	1,492	1,804	1,625	1,402	1,261	21,455	-580	-2.6%
2023/24	1,296	1,542	1,630	1,639	1,579	1,645	1,621	1,517	1,468	1,391	1,742	1,626	1,501	1,299	21,495	40	0.2%
2024/25	1,297	1,570	1,633	1,616	1,646	1,580	1,649	1,540	1,504	1,449	1,603	1,599	1,508	1,379	21,571	76	0.4%
2025/26	1,312	1,576	1,635	1,639	1,626	1,665	1,594	1,586	1,535	1,444	1,681	1,450	1,472	1,403	21,618	47	0.2%
2026/27	1,323	1,597	1,636	1,642	1,646	1,633	1,676	1,534	1,560	1,501	1,677	1,526	1,335	1,360	21,645	27	0.1%
2027/28	1,312	1,595	1,661	1,638	1,649	1,654	1,645	1,595	1,518	1,523	1,738	1,526	1,411	1,232	21,698	53	0.2%
2028/29	1,304	1,598	1,665	1,662	1,645	1,656	1,661	1,575	1,581	1,476	1,765	1,577	1,406	1,307	21,878	180	0.8%
2029/30	1,312	1,605	1,667	1,666	1,664	1,651	1,659	1,586	1,557	1,543	1,711	1,604	1,455	1,300	21,980	102	0.5%
2030/31	1,316	1,612	1,677	1,665	1,674	1,669	1,652	1,585	1,570	1,517	1,788	1,554	1,479	1,344	22,102	122	0.6%
2031/32	1,320	1,622	1,682	1,670	1,666	1,680	1,672	1,579	1,568	1,529	1,758	1,624	1,434	1,367	22,172	70	0.3%
2032/33	1,323	1,627	1,695	1,679	1,672	1,672	1,683	1,595	1,563	1,528	1,772	1,597	1,498	1,325	22,230	58	0.3%

Yellow box = largest grade per year  
Green box = second largest grade per year

- Strong Retention at Elementary Grade
- 6<sup>th</sup> Grade increases retention by 5%
- Not a major shift at High School



## Key Takeaways



- Little Rock School District has 21,900 students enrolled in the 2022-23 school year
- Little Rock School District had approx. 4,350 total home sales in 2022, an 11% decrease from 2021 totals
- Within Little Rock School District there are roughly 50 homes currently under construction, 150 lots available to build on, and more than 800 future lots planned
- In the mid scenario, Little Rocks School District is forecasted to level off at just over 20,500 students in 5 years
- The Forecasted High scenario projects enrollment in Little Rock School District to exceed 22,000 within 8 years